



# IDNext 902, 961, 971, 974, 978

Bluetooth, Eliwell AIR app for datalogging, product commissioning & remote support

IDNext and Bluetooth connectivity

# IDNext: the dongle bluetooth

The mobile phone and the APPs



## BLUETOOTH

IDNext through the BT dongle allows an easy new interface of the controller via **mobile device**. The controller has to be connected to the accessory **Eliwell BTLE dongle**

# IDNext: the dongle bluetooth

The mobile phone and the APPs

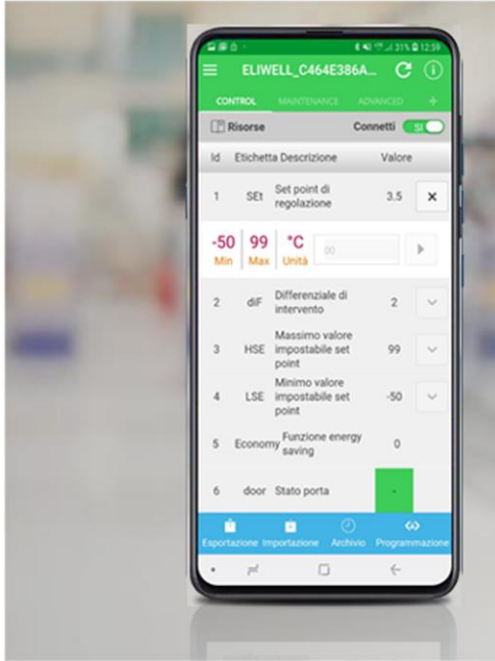


## Eliwell BTLE dongle

The **Bluetooth Low Energy dongle** is an accessory to be plugged into the TTL port to enable the communication between the controller and one Android or iOS smart device with Eliwell AIR app installed.

# IDNext: the dongle blue tooth

The mobile phone and the APPs



## Eliwell AIR APP

The **Eliwell AIR APP** through the Eliwell BLTE dongle allows to use the **mobile device** to interact with the controller both for **monitoring** and **commissioning**.

## ELIWELL AIR APP

The APP Eliwell Air is fully compatible with all iOS and Android devices (tablet and smartphone), free download from the Google play and Apple App Store.



Android 5.1 or higher

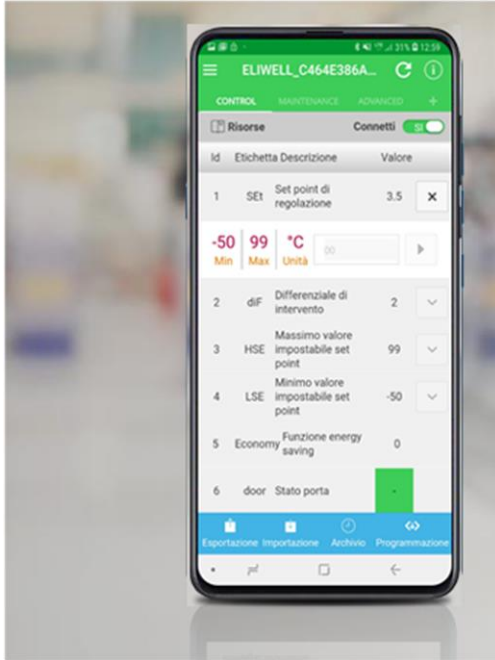


iOS 9 or higher



# IDNext: the dongle blue tooth

The mobile phone and the APPs

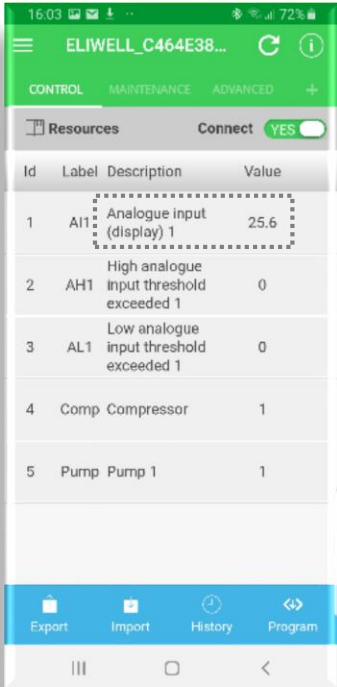


## Eliwell AIR APP

By using the APP it is possible to: verify the status of the controller, the value of operating variables, modify parameters values and send commands, download and upload the full map of the device and share it through any media installed in your device (for example via email or WhatsApp).

# IDNext: Eliwell AIR APP

## The mobile phone and the APPs



The screenshot shows the Eliwell AIR APP interface on a mobile phone. The top bar is green with the title 'ELIWELL\_C464E38...' and a refresh icon. Below the title are tabs for 'CONTROL', 'MAINTENANCE', and 'ADVANCED'. A 'Resources' section is visible with a 'Connect' toggle set to 'YES'. A table lists various resources with their IDs, labels, descriptions, and values. The first row is highlighted with a dashed box.

Id	Label	Description	Value
1	AI1	Analogue input (display) 1	25.6
2	AH1	High analogue input threshold exceeded 1	0
3	AL1	Low analogue input threshold exceeded 1	0
4	Comp	Compressor	1
5	Pump	Pump 1	1

At the bottom of the screen, there are icons for 'Export', 'Import', 'History', and 'Program'.

## Eliwell AIR APP

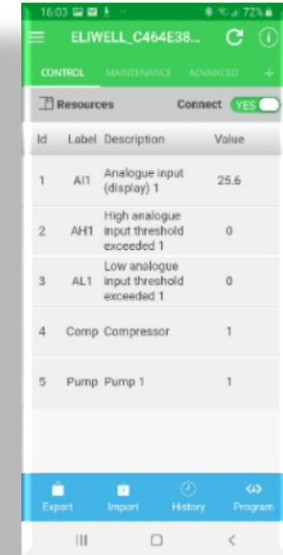
View of the status of the controller

View the temperature measured by the probes, if the defrost is in progress and so on.

## ELIWELL AIR APP

### View of the status of the controller

- the temperature measured by the controller's sensors
- the status of the controller's outputs ( compressor, evap. Fan, light etc... )
- the controller's functions ( stand-by, defrost, etc...).



16:03 72%

ELIWELL\_C464E38...

CONTROL MAINTENANCE ADVANCED +

Resources Connect YES

Id	Label	Description	Value
1	AH1	Analogue input (display) 1	25.6
2	AH1	High analogue input threshold exceeded 1	0
3	AL1	Low analogue input threshold exceeded 1	0
4	Comp	Compressor	1
5	Pump	Pump 1	1

Export Import History Program



# IDNext: Eliwell AIR APP

The mobile phone and the APPs



## Eliwell AIR APP

Send a command to the controller

Switch on/off the lights of the cooler or put it in stand-by or start a manual defrost...

# IDNext: Eliwell AIR

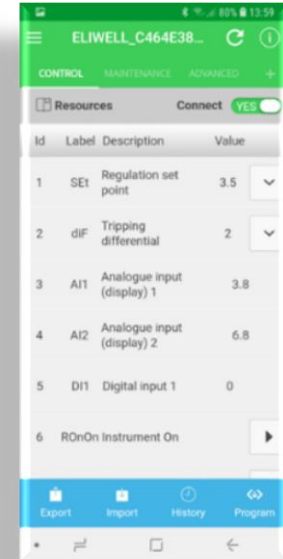
The Eliwell AIR app in detail



## ELIWELL AIR APP

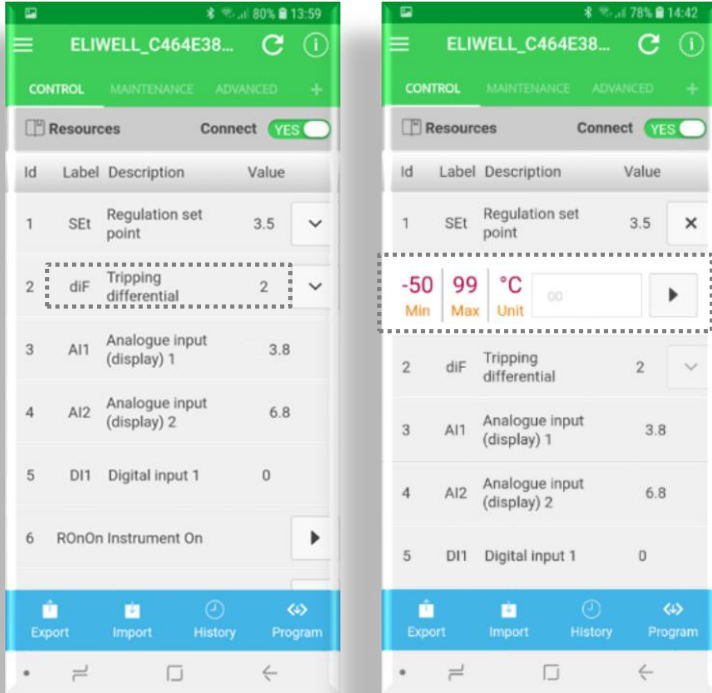
### Send a command to the controller

- Stand-by
- Lights on/off
- Manual defrost
- Economy mode on/off
- Update clock
- Deep cooling activation



# IDNext: Eliwell AIR APP

The mobile phone and the APPs



## Eliwell AIR APP

### Modify one parameter value

Select one parameter of the controller, view the range of possible values, modify the value

# IDNext: the Bluetooth dongle and datalogging

The mobile phone and the APPs



## DATALOGGING

**IDNext**, through the BTLE dongle, is ready for **datalogging**, offering data browsing, **graphs** and download via mobile device.

# IDNext: the dongle blue tooth and datalogging

The mobile phone and the APPs



## Eliwell BTLE memory

The Bluetooth Low Energy “Datalog” dongle is the version with internal memory to automatically storage **10080 records** from the controller.

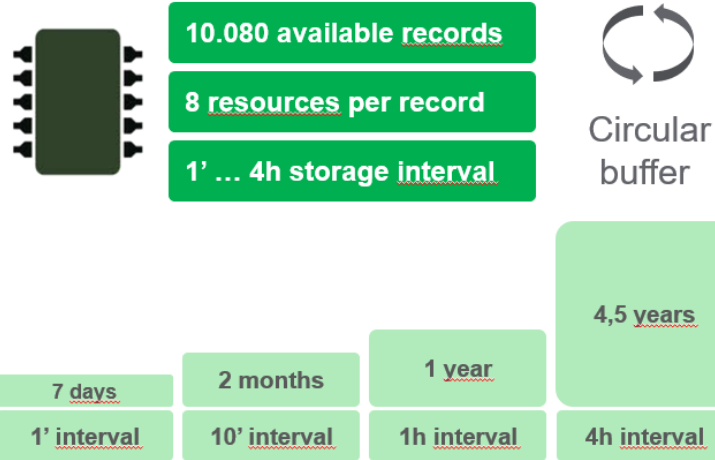
## ELIWELL BLTE



IDNext, through the BTLE dongle, is ready for **datalogging**, offering data browsing, **graphs** and download via mobile.

The **Bluetooth Low Energy “Datalog” dongle** is the version with internal memory to automatically store **10080 records** from the controller.

### Memory size and storage capability



# IDNext: Eliwell AIR APP

The mobile phone and the APPs



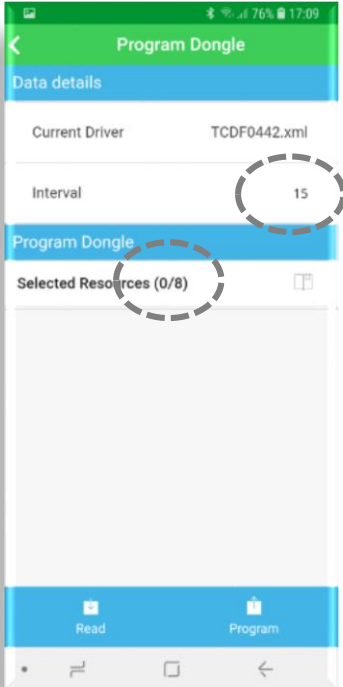
## Eliwell Air APP

The APP of the mobile phone allows the interaction with the dongle to set **recording intervals** and **download logged data**.

# Eliwell AIR APP

## Data logging setting

Set logging interval from **1 to 240 minutes** and select up to **8 resources** (i.d. one temperature) you want to log.





# IDNext: Eliwell AIR APP

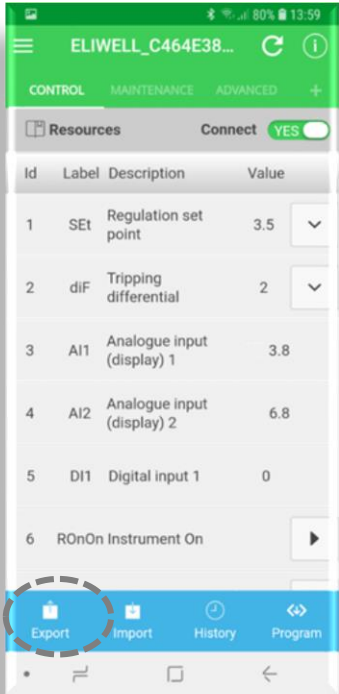
The mobile phone and the APPs



## Eliwell AIR APP

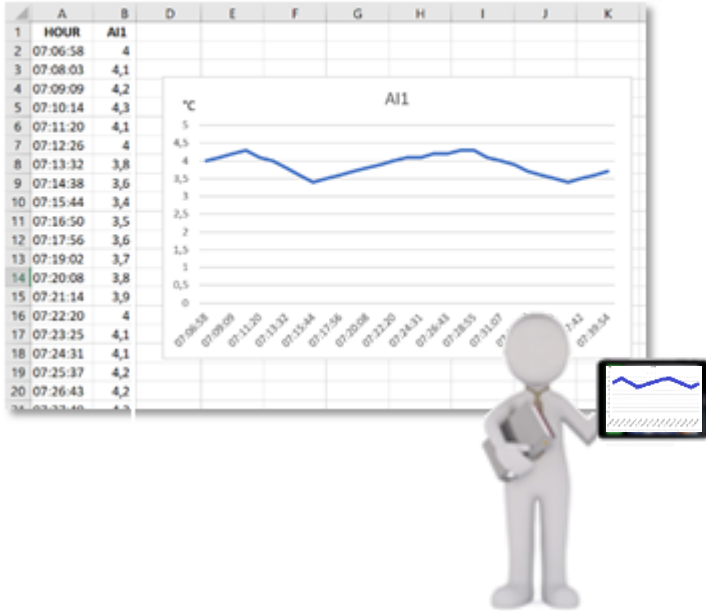
Download, share & view data

Use the mobile phone to share the data by **email** or **WhatsApp** or view them on **graphs** directly on your smart device. A perfect tool even for remote support.



# IDNext: Eliwell AIR APP

The mobile phone and the APPs



## Eliwell AIR APP

View exported data

Beside the possibility to graphs the data on the smart device, to view the downloaded data in table or chart mode you can use **Excel** or an equivalent APP.



[eliwell.com/digital-academy](http://eliwell.com/digital-academy)

Life Is On

**Schneider**  
Electric